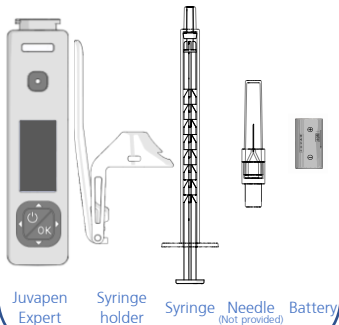


JUVAPEN  
*Expert*

QUICK START GUIDE

## Box content



## User Interface

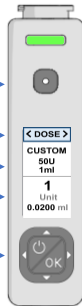
Activation button →

*Function* →

*Product / Dilution* →

*Dose* →

On / Off  
Navigation pad →

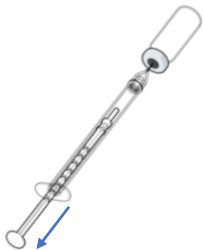


## Navigation pad



Please refer to A2 for battery replacement at the end of the QSG

Fill syringe



1

Remove bubbles



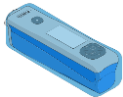
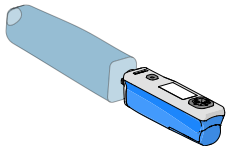
2

Break the rod  
(breakable at 0.1ml  
increments)



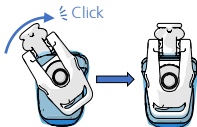
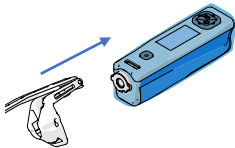
3

Insert sleeve



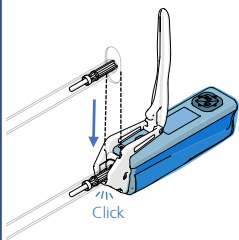
4

Attach the syringe holder



5

Slide syringe



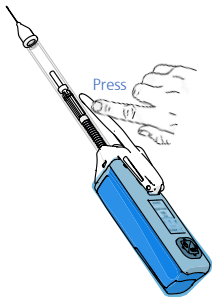
6

Turn on



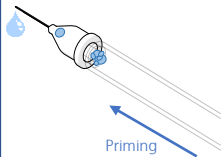
7

Prime...



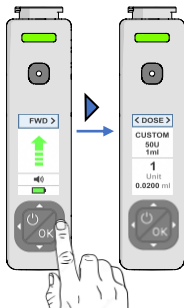
8

...until **all** air bubbles are removed



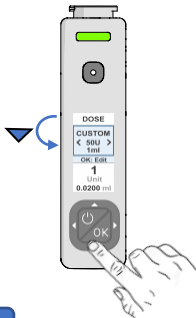
9

## Select DOSE *Function*



10

## Select *Product*



11

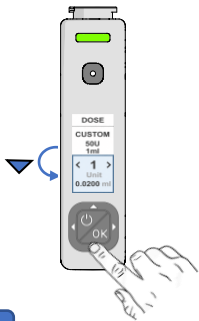
## Choose the *Product*

**i** Please refer to A1 at the end of the QSG for Product possibilities



12

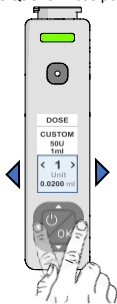
## Select *Dose*



13

## Choose *Dose*

**i** Please refer to A1 at the end of the QSG for Dose possibilities



14

## Inject



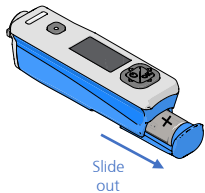
15

## *Product and Dose*

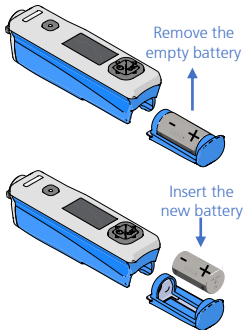
<b>Product</b>	<b>Dilution</b>	<b>Dose in unit</b>	<b>Dose in volume (ml)</b>
BTX1	50U in 1ml	0.5 – 1 – 2 – 3 – 4 – 5	0.01 – 0.02 – 0.04 – 0.06 – 0.08 – 0.1
BTX2	50U in 1.25ml	0.5 – 1 – 2 – 3 – 4 – 5	0.0125 – 0.025 – 0.05 – 0.075 – 0.1 – 0.125
AZZAL1	125U in 0.63ml	1.25 – 2.5 – 5 – 10 – 20	0.0063 – 0.0126 – 0.0252 – 0.0504 – 0.1008
AZZAL2	125U in 1ml	1.25 – 2.5 – 5 – 10 – 20	0.01 – 0.02 – 0.04 – 0.08 – 0.16
CUSTOM	10U to 500U in 0.3ml to 5ml	0.25 to 20	0.005 to 0.2
VOLUME	-	-	0.005 to 0.2



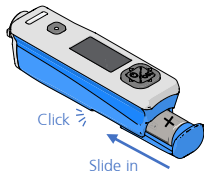
### A) Remove battery holder



### B) Change battery



### C) Insert battery holder



ROBOTIC SYRINGES

J U V A +



JUVAPLUS SA  
Rue du Pré 10  
CH-2114 Fleurier  
SWITZERLAND